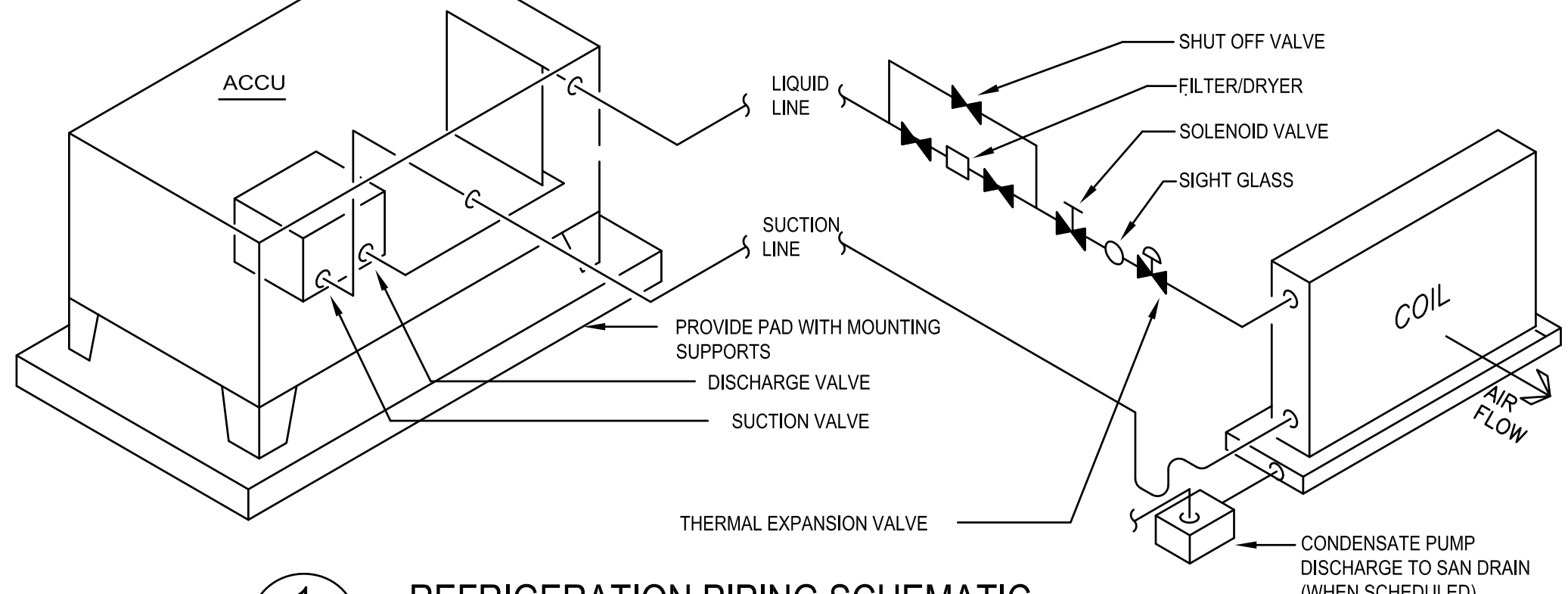


LINE WEIGHT KEY	
	ALL ITEMS INDICATED BY A DARK SOLID LINE ARE NEW
	ALL ITEMS INDICATED BY A LIGHT SOLID LINE ARE EXISTING TO REMAIN
	ALL ITEMS INDICATED BY A DARK DASHED LINE ARE EXISTING TO BE REMOVED OR RELOCATED.

SYMBOLS	
SYMBOL	DESCRIPTION
	SURFACE / RECESSED DOWNLIGHT
	SURFACE/SUSPENDED FLUORESCENT/LED FIXTURE
	DUPLEX RECEPTACLE
	FIRE ALARM CONTROL PANEL
	FIRE ALARM AUTOMATIC SENSOR - SMOKE DETECTOR
	FIRE ALARM SMOKE ALARM
	FIRE ALARM CONTROL MODULE
	SINGLE POLE SWITCH
	BRANCH PANEL WITH DESIGNATION
	MOTOR WITH DESIGNATION
	DISCONNECT SWITCH
	WORK NOTE
	EQUIPMENT CONNECTION

NOTE:
 THE CONTRACTOR SHALL VERIFY PIPE SIZES & INSTALLATION W/ THE EQUIPMENT SUPPLIER. THE COMPLETE SYSTEM SHALL BE INSTALLED IN ACCORDANCE W/ THE EQUIPMENT SUPPLIERS WRITTEN INSTRUCTIONS.



1 REFRIGERATION PIPING SCHEMATIC
 NO SCALE

FAN COIL UNIT SCHEDULE																	
PLAN MARK (FCU-)	MOUNTING STYLE	DIMENSIONS			AIR SIDE		COOLING				REFRIGERANT		MOTOR (FLA)	M.C.A.	VOLT	PHASE	REMARKS
		WIDTH (IN.)	HEIGHT (IN.)	DEPTH (IN.)	AIRFLOW (CFM)	EXT. STATIC PRESS. (IN. W.G.)	AIR SIDE		CAPACITY		TYPE	CHARGE (POUNDS)					
1	WALL	42	12	9	500	-	13.7	18.0	80	67	R-410a	5.1	0.76	0.4	208	1	1

REMARKS:
 1. PROVIDE WITH WALL MOUNTED THERMOSTAT.

AIR COOLED CONDENSING UNIT SCHEDULE																	
PLAN MARK (ACCU)	LOCATION	TOTAL CAPACITY (MBH)	SEER	AMBIENT TEMP. (F)	REFRIGERANT TYPE	COMPRESSOR		ELECTRICAL DATA				DIMENSIONS			MAXIMUM OPERATING (WEIGHT (LBS))	REMARKS	
						NO.	TYPE	CAPACITY (TONS) (EACH)	MCA	MOCP	VOLT	PHASE	WIDTH (IN.)	LENGTH (IN.)			HEIGHT (IN.)
1	EXTERIOR MACHINE ROOM	18	18.6	95	R-410A	1	INVERTOR	1.5	16.5	20	208	1	13	36	31	150	1

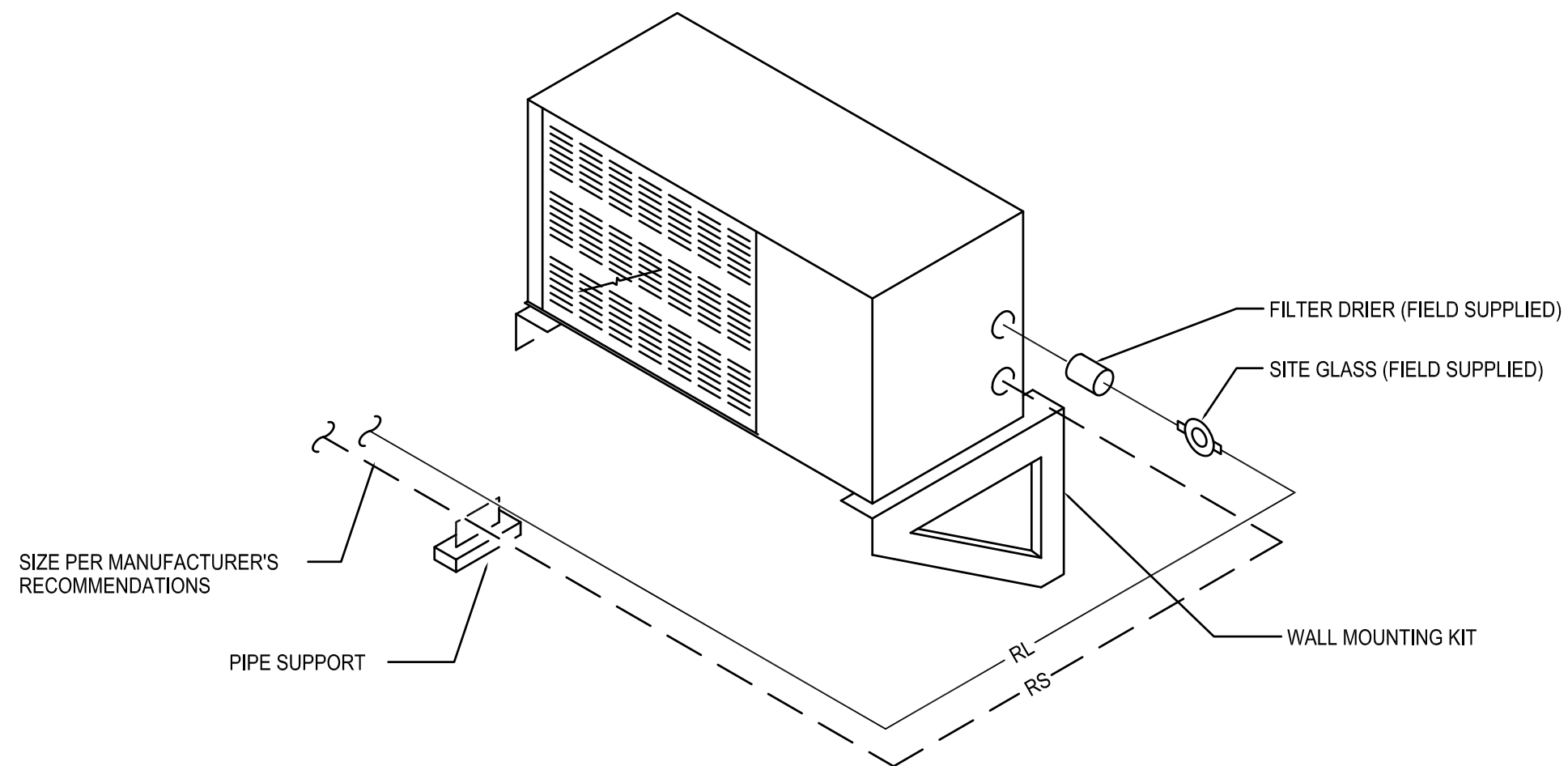
REMARKS:
 1. PROVIDE WITH WALL MOUNT FOR EXTERIOR SUPPORT.

GENERAL PROJECT ELECTRICAL NEW WORK NOTES:

- ALL LUMINAIRES SHALL BE PROVIDED WITH LABELS IDENTIFYING THE PANEL NAME AND CIRCUIT BRANCH, FIRMLY ATTACHED, TO THE OUTSIDE OF THE LUMINAIRE.
- WHERE NEW DEVICES ARE SHOWN THE ELECTRICAL CONTRACTOR SHALL DO ALL CUTTING AND DO ALL PATCHING AND PAINTING OF EXISTING WALLS.

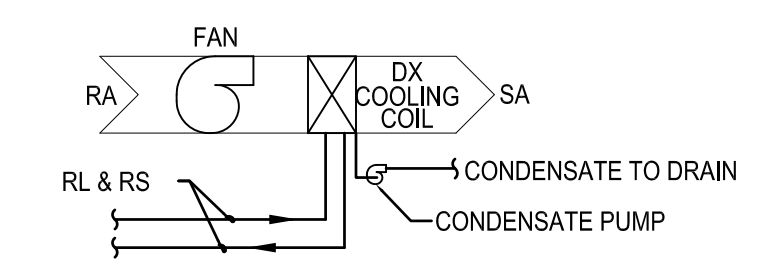
GENERAL PROJECT ELECTRICAL DEMOLITION REQUIREMENTS:

- ELECTRICAL CONTRACTOR SHALL VERIFY THE EXISTING CONDITIONS AT THE PROJECT SITE BEFORE SUBMITTING COST PROPOSAL.
- THE ELECTRICAL CONTRACTOR SHALL VISIT THE SITE TO VERIFY DEVICES NOT SHOWN. ALL DEVICES NEED TO BE REMOVED IN THE DEMOLITION AREA UNLESS NOTED ON THE DRAWINGS.
- IT IS MANDATORY THAT THE EXISTING BUILDING REMAIN IN CONTINUOUS AND NON-INTERRUPTED OPERATION DURING REMODELING/ALTERING. SERVICES TO EXISTING BUILDING SHALL BE KEPT ON CONTINUOUS OPERATION INCLUDING POWER, LIGHTING, TELEPHONE, FIRE ALARM, ETC. ANY ABSOLUTELY NECESSARY INTERRUPTION OF THESE SERVICES TO ACCOMPLISH PROJECT CONSTRUCTION, SHALL BE HELD TO A MINIMUM AND ARRANGED WITH THE OWNER TWO (2) WEEKS IN ADVANCE. TEMPORARY SERVICES SHALL BE FURNISHED AND INSTALLED WHERE NECESSARY TO ACCOMPLISH THIS PURPOSE. TEMPORARIES SHALL BE REMOVED ONLY AFTER NEW PERMANENT SERVICES ARE INSTALLED AND FULLY OPERATIONAL.
- ELECTRICAL CONTRACTOR SHALL BE RESPONSIBLE FOR HIS OWN DEMOLITION, REMOVAL, CAPPING, STORING, ABANDONING, DISCONNECTING, RELOCATING AND RECONNECTION OF EXISTING ELECTRICAL EQUIPMENT AND MATERIAL. ALL CUTTING, PATCHING, REPAIRING, REPLACEMENT AND REFINISHING, SHALL MATCH THE EXISTING CONSTRUCTION AS NEARLY AS POSSIBLE.
- EXCEPT WHERE OTHERWISE SHOWN OR NOTED ON DRAWING - "TO BE RETAINED, RELOCATED" OR HEREINAFTER NOTED, ALL EXISTING ELECTRICAL EQUIPMENT AND MATERIAL IN AREAS TO BE REMODELED/ALTERED SHALL BE REMOVED WHERE THEY INTERFERE WITH PROPOSED NEW CONSTRUCTION AND/OR INTERFERE WITH PROPOSED USAGE OF SPACE BY OWNER AS FOLLOWS:
 - ANY FEEDERS, CONDUITS, BRANCH CIRCUITS, SIGNAL AND TELEPHONE CIRCUITS, ETC. PASSING THROUGH THE REMODELED AREAS TO SERVE (OR BE SERVED FROM) EXISTING ADJACENT, REMOTE OR SURROUNDING AREAS THAT ARE TO REMAIN, SHALL BE RETAINED AND KEPT OPERATIONAL AND SHALL BE REROUTED IN ALL CASES WHERE THEY INTERFERE WITH ANY NEW WORK OR USAGE TO BE ACCOMPLISHED IN THE REMODELED AREA.
- THE OWNER SHALL HAVE THE FIRST CHOICE TO ACCEPT EXISTING DEVICES BEING REMOVED.



2 AIR COOLED CONDENSING UNIT (ACCU-1)
 NO SCALE

FAN COIL UNIT SERVING THE ELEVATOR MACHINE ROOM: PROVIDE AN ELECTRIC OUTDOOR THERMOSTAT TO SHUT OFF POWER FOR FCU-3 WHENEVER OUTDOOR TEMPERATURE IS 55°F (ADJUSTABLE) & BELOW.



SEQUENCE OF OPERATION:
 SINGLE TEMPERATURE ELECTRIC THERMOSTAT, LOCATED IN ROOM SERVED, SET AT 85°F (ADJUSTABLE), SHALL CYCLE UNIT ON.

3 FAN COIL UNIT CONTROL (FCU-1)
 NO SCALE

ALTHOUGH EVERY EFFORT HAS BEEN MADE IN PREPARING THESE PLANS AND CHECKING THEM FOR ACCURACY, THE CONTRACTOR AND SUBCONTRACTORS MUST CHECK ALL DETAIL AND DIMENSIONS OF THEIR TRADE AND BE RESPONSIBLE FOR THE SAME.

DESIGN: HEI
 DRAWN: HEI
 APPROVED: HEI

PLAN MODIFICATIONS:	DATE:
01d Documents	09/30/2015

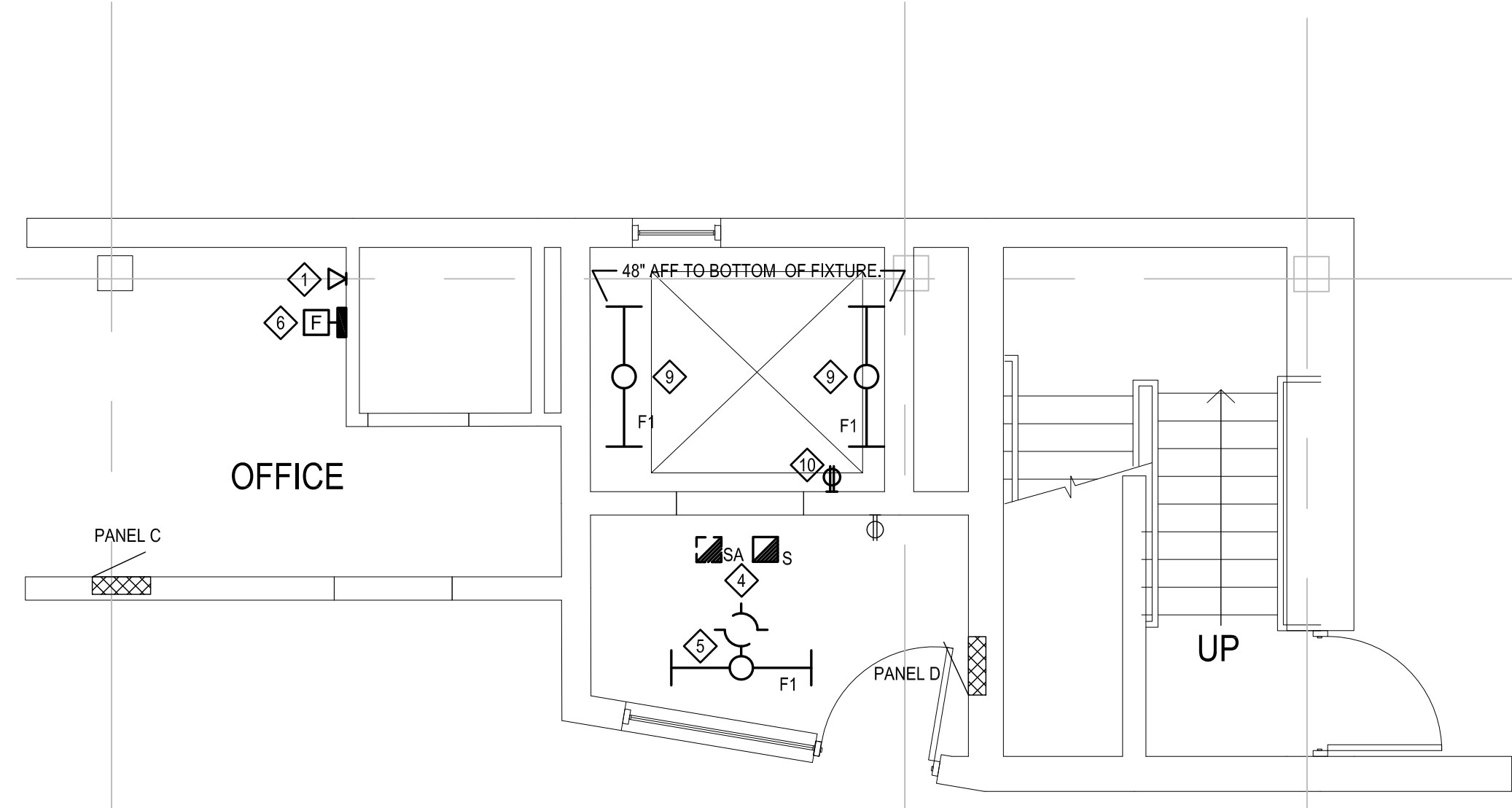
- KEYED NEW WORK NOTES:**
- ◇ DISCONNECT EXISTING ELEVATOR CAB LIGHT SWITCH AND RECONNECT TO NEW ELEVATOR CAB LIGHT. EXTEND EXISTING WIRING AND CONDUIT IF REQUIRED.
 - ◇ EXISTING ELEVATOR DISCONNECT TO BE REUSED. PROVIDE NEW LOAD SIDE BRANCH CIRCUIT CONDUCTORS AND RACEWAY FROM DISCONNECT TO ELEVATOR CONTROLLER.
 - ◇ DISCONNECT EXISTING ELEVATOR AND REMOVE BRANCH CIRCUIT BACK TO ELEVATOR DISCONNECT. PROVIDE CONNECTION TO NEW ELEVATOR AND PROVIDE NEW CONDUCTORS AND RACEWAY FROM EXISTING DISCONNECT TO NEW ELEVATOR CONTROLLER. INSTALL (3)#3CU + (1)#0CU GRND IN 1" RACEWAY.
 - ◇ DISCONNECT AND REMOVE EXISTING FIRE ALARM SMOKE ALARM AND PROVIDE AND CONNECT NEW SYSTEM TYPE SMOKE DETECTOR.
 - ◇ DISCONNECT AND REMOVE EXISTING LIGHT FIXTURE AND RECONNECT NEW FIXTURE. EXTEND EXISTING WIRING AND CONDUIT IF REQUIRED.
 - ◇ NEW FIRE ALARM CONTROL PANEL. FEED FROM SPARE 20/1 LOCATED IN EXISTING PANEL C LOCATED IN OFFICE. PROVIDE 2#12, #12 GROUND IN 1/2" CONDUIT.
 - ◇ FIRE ALARM CONTROL MODULES TO INTERFACE WITH ELEVATOR FOR RECALL FUNCTIONS.
 - ◇ DISCONNECT EXISTING PHONE LINE FROM DEMOLISHED CONTROLLER AND RECONNECT TO NEW ELEVATOR CONTROLLER.
 - ◇ NEW LIGHTING IN ELEVATOR PIT. CONNECT TO NEW CIRCUIT FROM PANEL D.
 - ◇ NEW GFCI RECEPTACLE IN PIT. CONNECT TO NEW LIGHTING CIRCUIT FROM PANEL D.
 - ◇ FEED ACCU-1 FROM EXISTING 20/1 BREAKER IN EXISTING PANEL D. PROVIDE 2#12, #12 GND. IN 1/2" C. FCU-1 IS FEED ACCU-1.
 - ◇ EXISTING LOUVER TO BE BLANKED OFF.

LINE WEIGHT KEY

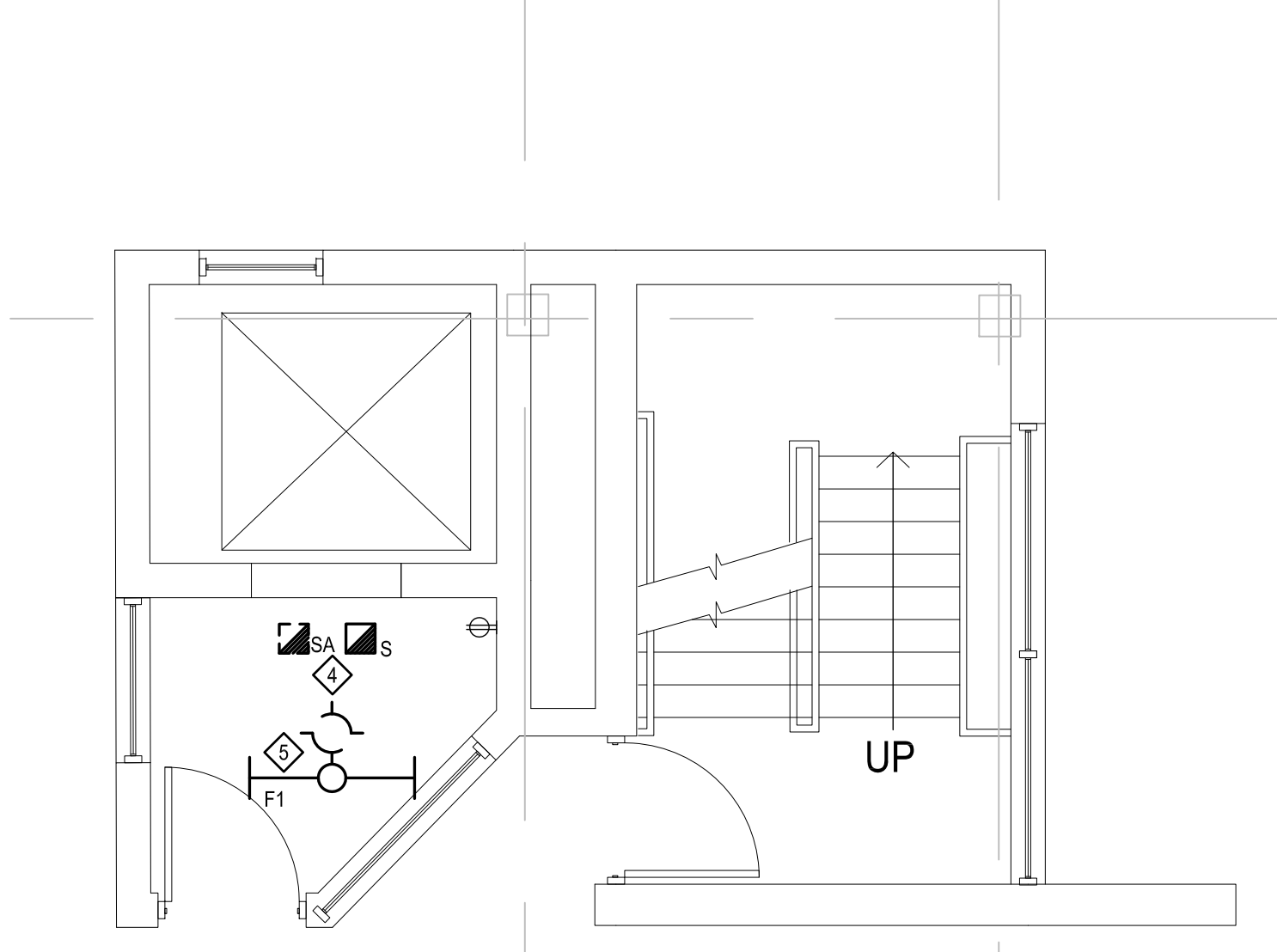
	ALL ITEMS INDICATED BY A DARK SOLID LINE ARE NEW
	ALL ITEMS INDICATED BY A LIGHT SOLID LINE ARE EXISTING TO REMAIN
	ALL ITEMS INDICATED BY A DARK DASHED LINE ARE EXISTING TO BE REMOVED OR RELOCATED.

LUMINAIRE SCHEDULE

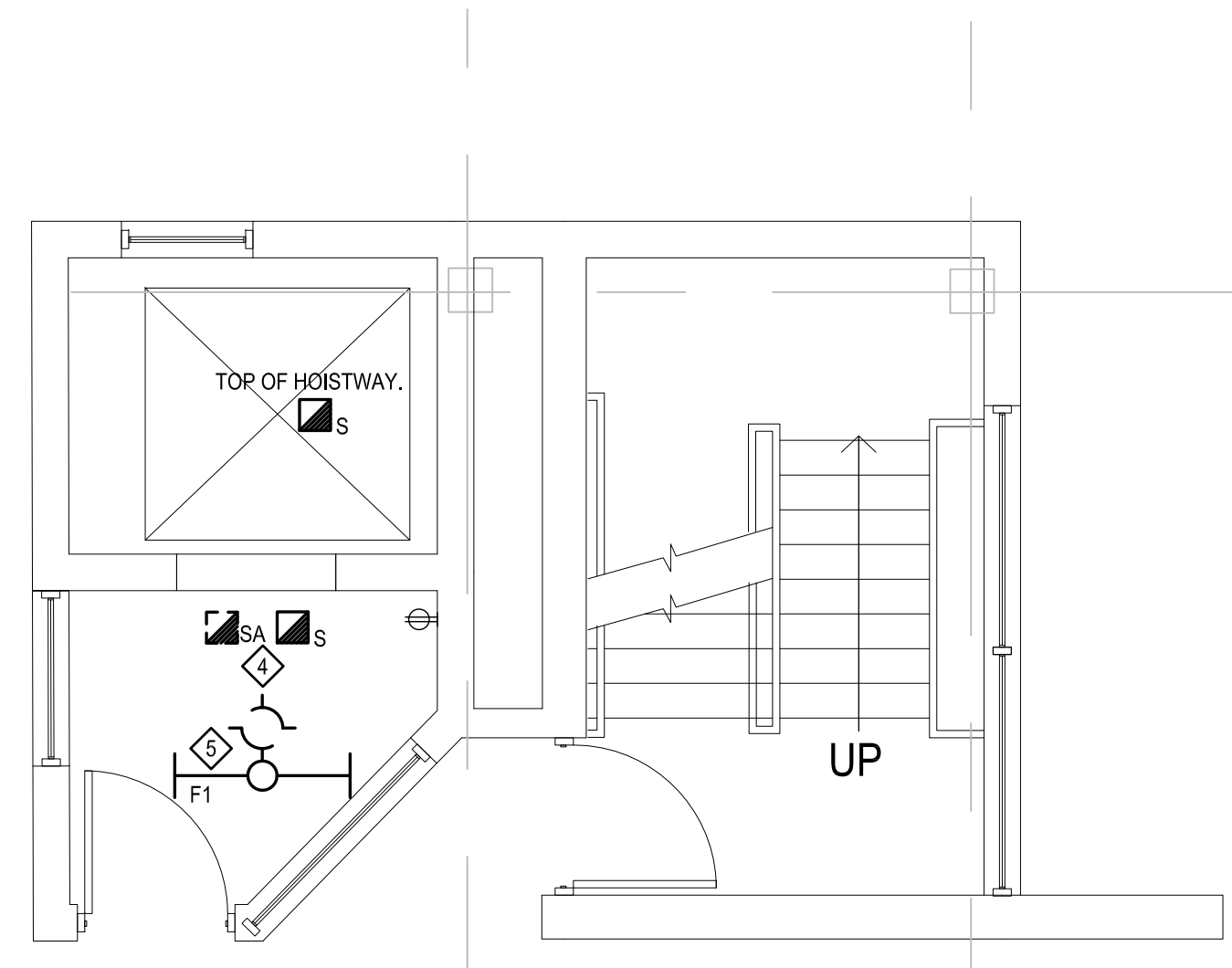
TYPE F1 - HOLOPHONE EVT4 600LM PCL MC XX GZ10 40K 80CRI OR SIMILAR
--



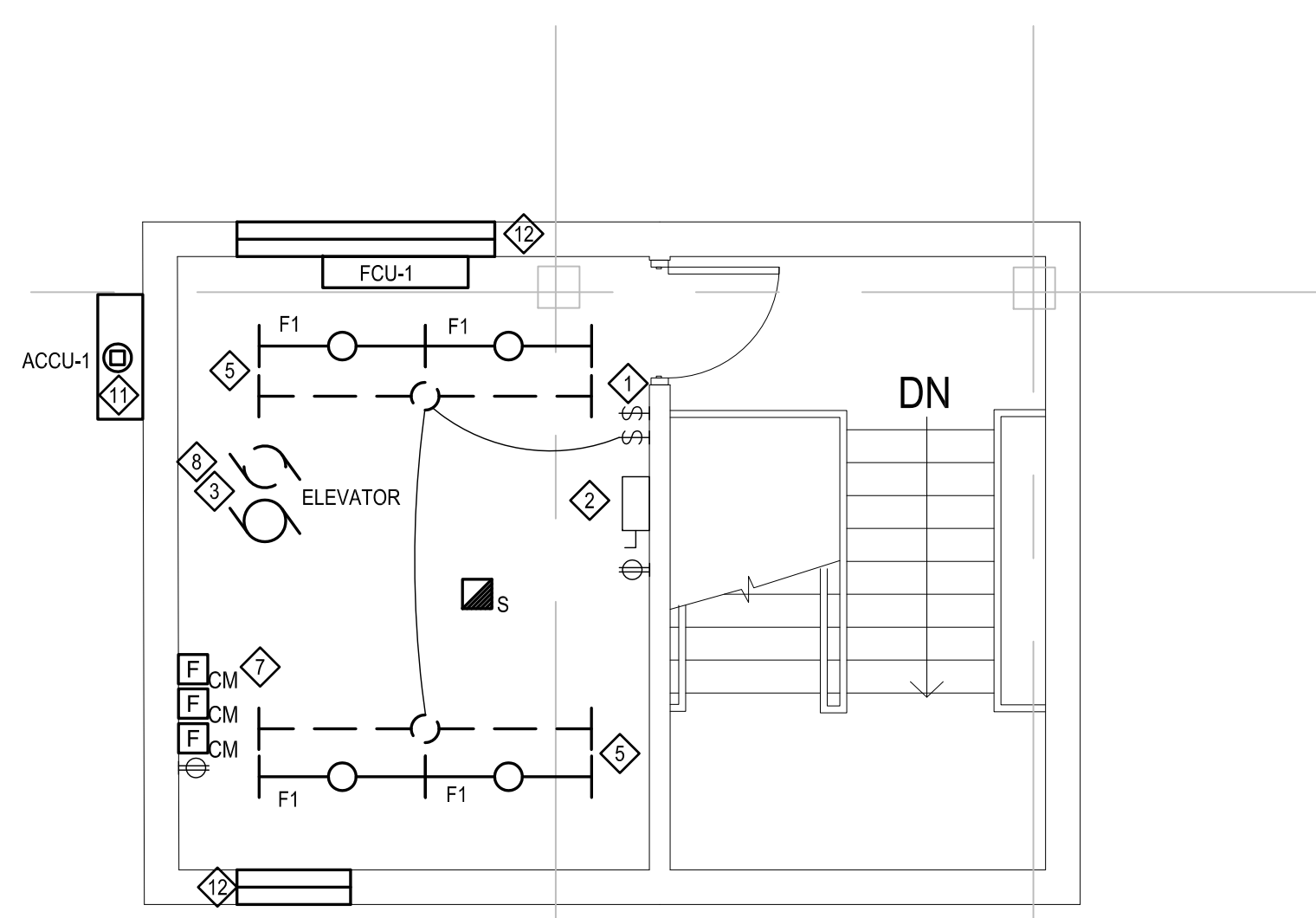
1 ELECTRICAL PLAN - LEVEL "A"
 SCALE: 1/4" = 1'-0"
 PLAN NORTH TRUE NORTH



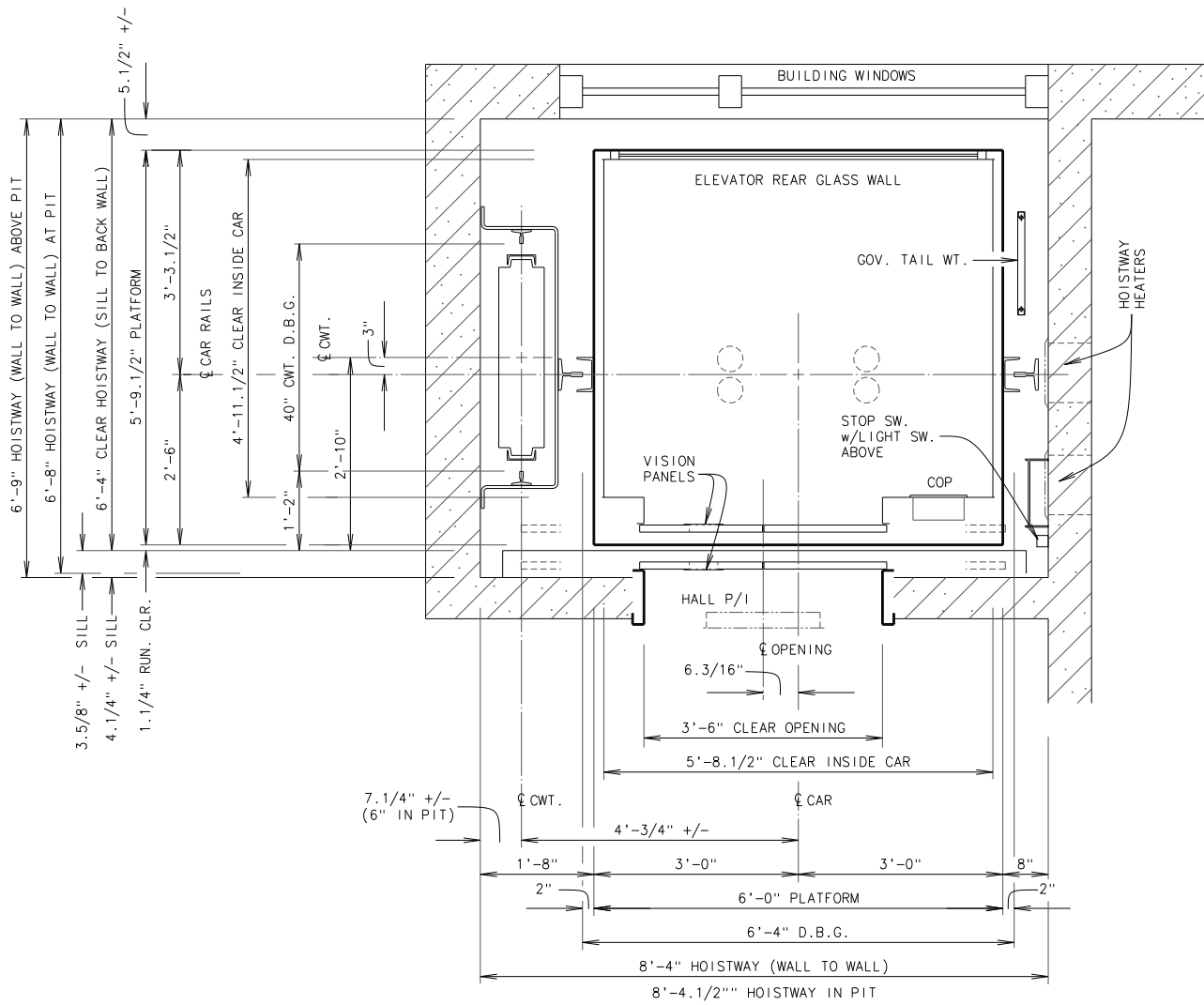
2 ELECTRICAL PLAN - LEVELS "B,C,D,E, & F" (TYPICAL)
 SCALE: 1/4" = 1'-0"
 PLAN NORTH TRUE NORTH



3 ELECTRICAL PLAN - LEVEL "G"
 SCALE: 1/4" = 1'-0"
 PLAN NORTH TRUE NORTH



4 ELECTRICAL PLAN - PENTHOUSE LEVEL "H"
 SCALE: 1/4" = 1'-0"
 PLAN NORTH TRUE NORTH



PLAN OF ELEVATOR HOISTWAY
AT BOTTOM LANDING

STAIR "B"

EXISTING ELEVATOR DATA	
STATE REGISTRATION NO.	18544
RATED LOAD	2500 LBS.
RATED SPEED	200 FPM
STOPS / OPENINGS	7 / 7
NET TRAVEL	63'-7"
LANDINGS	Y1-X1/X2-Y2/Y3-X3/X4-Y4/Y4-X5/X6-X7/Y6/Y7
OPERATION	SELECTIVE-COLLECTIVE
CONTROL	DOVER COMPOSITE VARIABLE VOLTAGE
MACHINE TYPE	GEARED (DOVER GD-45)
SUSPENSION ROPES	6 - 1/2" TRACTION STEEL
GOVERNOR	DOVER 66700
SAFETY	FLEX CLAMP (DOVER 65400)

CONSULTANT



Performance
Elevator Consulting, LLC.

DRAWING HOISTWAY PLAN

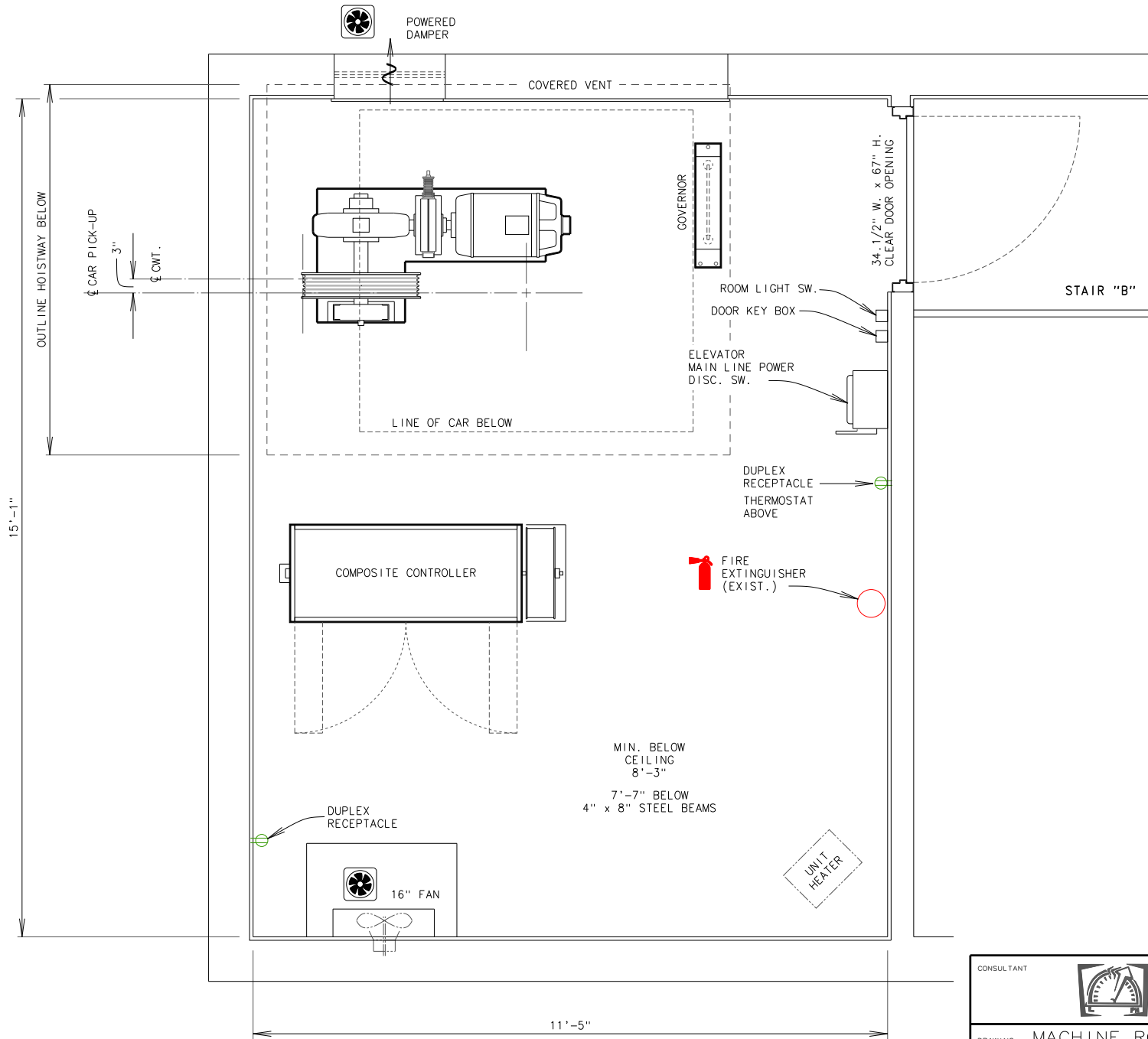
ELEVATOR TYPE ELECTRIC PASSENGER

FACILITY OVERTURE CENTER PARKING RAMP

ADDRESS 318 W. MIFFLIN STREET


CITY MADISON, WISCONSIN

DATE	SYM.	REVISION	BY	DRAWING DATE	DRAWN BY	REVISION	SHEET NUMBER
				5/17/2016	JM		1 of 2



PLAN OF ELEVATOR MACHINE ROOM
 AT PENTHOUSE
 EXISTING CONDITIONS SHOWN

DATE	SYM.	REVISION	BY

CONSULTANT			
DRAWING MACHINE ROOM PLAN			
ELEVATOR TYPE ELECTRIC PASSENGER			
FACILITY OVERTURE CENTER PARKING RAMP			
ADDRESS 318 W. MIFFLIN STREET			
CITY MADISON, WISCONSIN			
DRAWING DATE	DRAWN BY	REVISION	SHEET NUMBER
5/17/2016	JM	.	2 of 2